

Total Quality System 9000 Family of Products

Tutorial Module



Copyright © 2011 Integrated Solution Providers Software, Inc.

All rights reserved. No part of this publication may be reproduced, stored in a retrieval system, or transmitted in any form or by any means, electronic, mechanical, photocopying or otherwise, without the prior written consent from ISP Software, Inc.

Toll Free: 877.865.7562 Fax: 989.317.0646

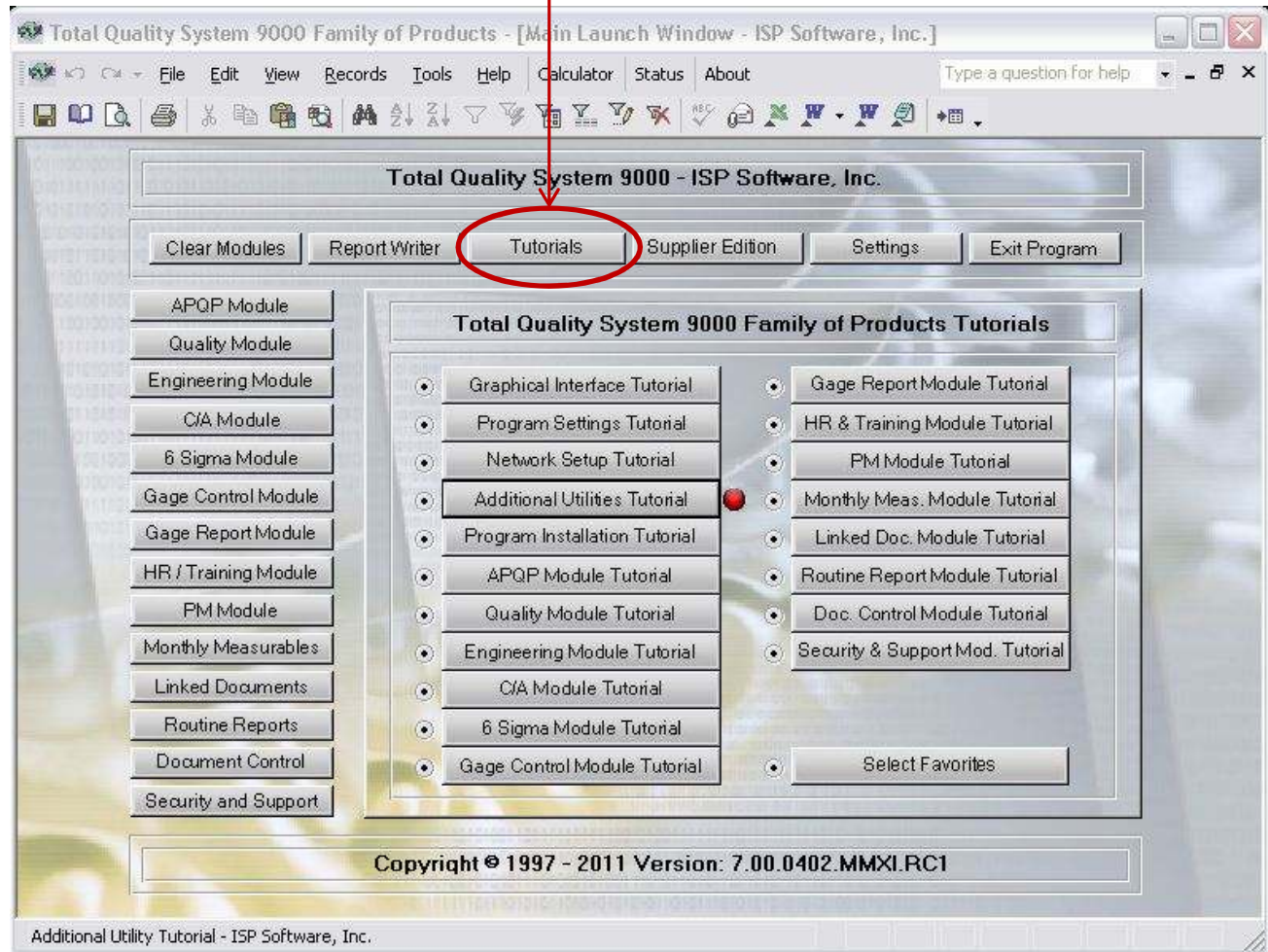
E-mail: Sales@ispsoftware-solutions.com Web Site: <http://www.ispsoftware-solutions.com>

Your TQS-9000 Version 7.0 Product has been provided with direct links to help and instruction files that are located on our web site.

To access your help files, click on the "Tutorials" button at the top of the main program launch window.

Built into your program are direct links for learning how to use the Graphical Interface of your program, how to optimize your program settings, understanding the network setup options, installing and using the additional utilities provided with your program, installing your product, details of the features in the APQP, Quality, Engineering, Corrective Action, Six Sigma, Gage Control, Gage Report, Human Resources, Preventative Maintenance, Monthly Measurable, Linked Documents, Routine Report, Document Control, and Security and Support Modules.

To learn more about any of these features or modules, simply click on the button you wish.





Total Quality System 9000 Family of Products Optimum Program Setting Tutorial

When you click on an option from the "Tutorial" module in you TQS-9000 application you will be taken to the web page with the instructions for your selection.

From this page you may click on the header for the information that you wish to review.

To view the complete instruction for the topic that you wish to use, just click on the icon under the topic and the complete slide will be shown. (An example is shown on the next slide.)

When you install your Total Quality System 9000 product some of the settings may be different from what is needed for the program to operate efficiently and effectively. The changes to the settings that are provided with your product may occur due to your default machine settings, other software that installed, or from customized settings that have been provided for the machine that your product is installed on. By default, ISP Software, Inc. provides all software using the most unobtrusive installation methods as possible as we do not want to change any of your existing installations or settings. To assure that all of your TQS-9000 product settings are set to work optimally we suggest that you check these settings after installation.

Total Quality System 9000 Tutorial Index

Click on an Image Below to Enlarge

Accessing Your Total Quality System 9000 Program Settings



Total Quality System 9000 Program "View" and "General" Tab Settings



Program "Settings Module"

To the right is an example of one of the instructions slides that may be accessed from the web page for the selected instructions.

By clicking on the "Settings" button, users may access the available features for customizing their installation.

Under the "Program Settings" option you may use these features to change the location of your data file where your data is stored, link to a remote database if you have purchased the TQS-9000 Supplier Edition, change the security settings, update your data file if you are updating your program installation, or reset your product key if you upgrading your product.

Under the "Select Module Favorites" you may choose which features will be selected as a favorite in each module and choose to deactivate specific features that you do not wish to use at this time. Deactivating features may make navigating the program easier as those buttons would not show as being active.

You may also turn the mouse scroll feature on or off. By turning off the mouse scroll feature there is less chance that you will accidentally advance to a new record when working in your program. Your product has been shipped with the mouse scroll feature automatically disabled.



At the bottom of each instruction page provided on our web site you may elect to view or download the complete instruction that has been provided for the module that you are viewing.

Total Quality System 9000 Program "Tables/Queries" Tab Settings



[View or Download These Instructions in a .pdf Document](#)

Integrated Solution Providers Software, Inc.



Integrated Solution Providers Software, Inc.

P.O. Box 1281

Mount Pleasant, MI 48804

Toll Free: 877.865.7562

Fax: 989.317.0676

Home Page: <http://www.ispsoftware-solutions.com>