

# Total Quality System 9000 Family of Products

## Total Quality System 9000 Program Settings Module



Copyright © 2011 Integrated Solution Providers Software, Inc.

All rights reserved. No part of this publication may be reproduced, stored in a retrieval system, or transmitted in any form or by any means, electronic, mechanical, photocopying or otherwise, without the prior written consent from ISP Software, Inc.

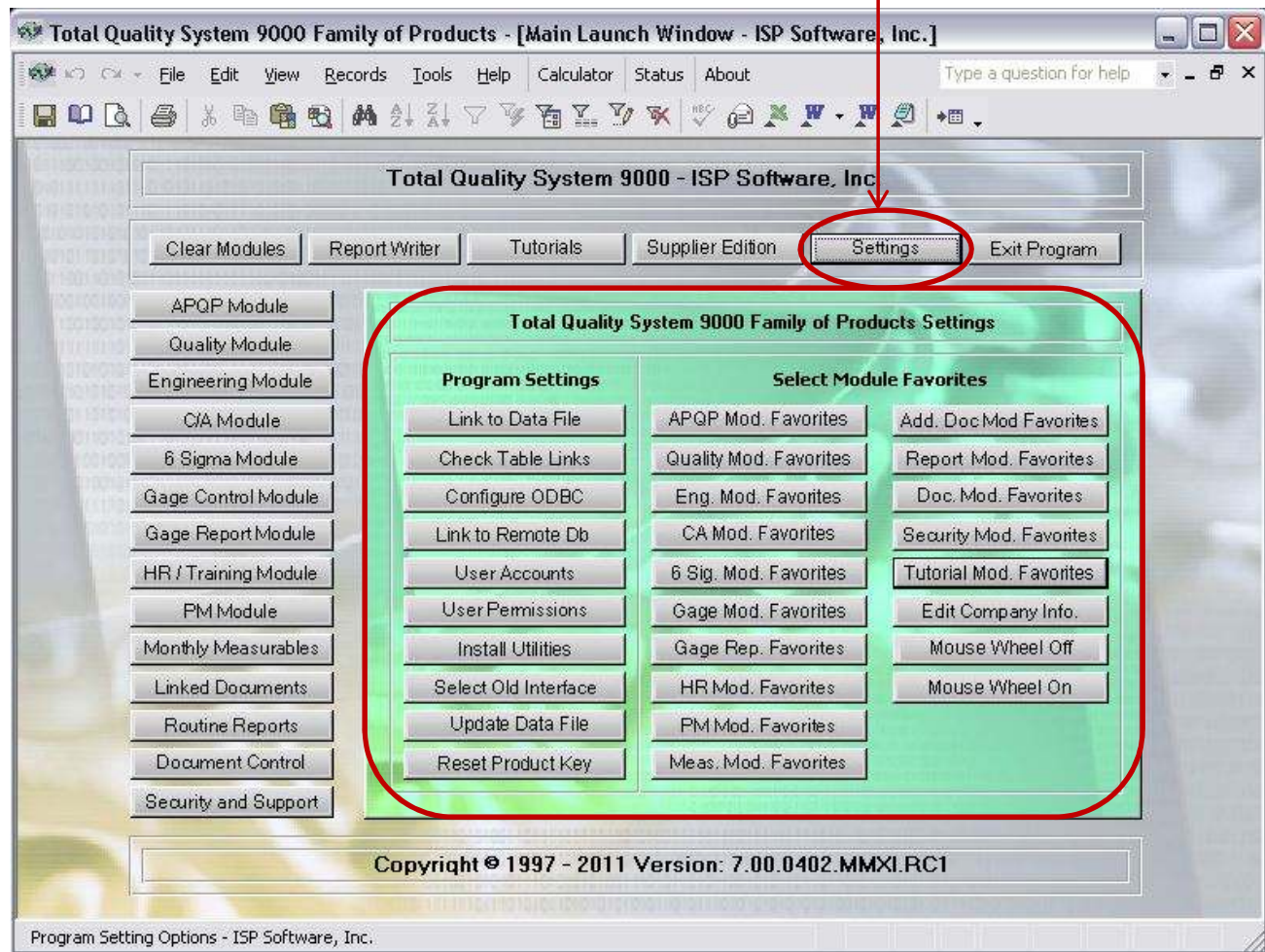
Toll Free: 877.865.7562 Fax: 989.317.0646

E-mail: [Sales@ispsoftware-solutions.com](mailto:Sales@ispsoftware-solutions.com) Web Site: <http://www.ispsoftware-solutions.com>

In your Total Quality System 9000 Version 7.0 product we have provided a “Settings” module to provide several customizable options for your program.

In this module you may link to your data file if it is stored on your network, check your table connections, configure an ODBC connection if you are using the TQS-9000 Supplier Edition or have upsized your data, access and change your user accounts and permissions, install additional utilities, access to script runner for updating your data file from a previous version, update your product key if you are upgrading your product or adding additional users, set your favorites and lock non used features, edit your company information, and turn the scroll feature for your mouse on and off.

Details for each of these features is included in this instruction.



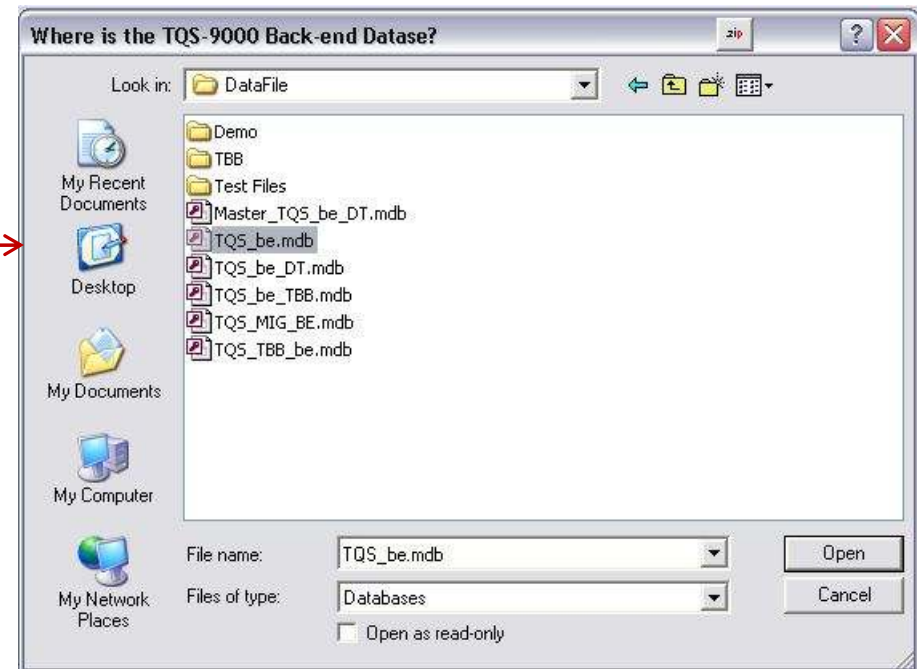
From the program “Setting” module you may select the “Link to Data File” option if you are installing your data file on a server or in a different location than the default directory when your program was installed.

When you click on the “Link to Data File” button a popup form will be presented. (For instructions on moving your data file or connecting to a data file stored on your network, please refer to the instructions for a network setup.) To begin the process of reconnecting to the new location of your data file, click on the “Browse for Data File” button.

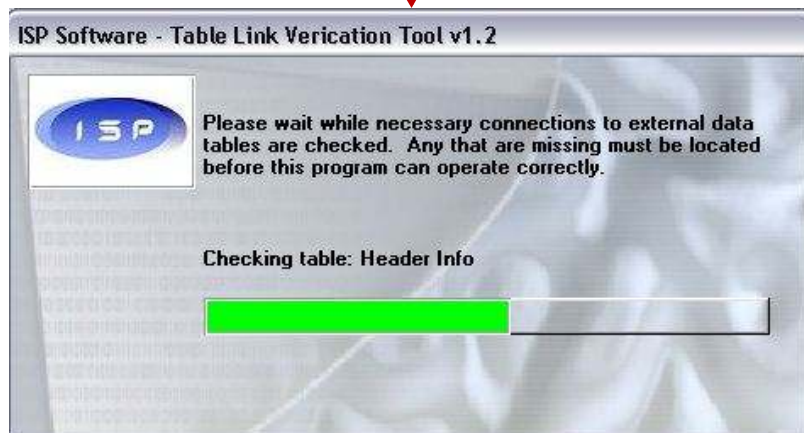


When you click on the “Browse for Data File” button, another popup window will be displayed. Use this popup window to browse to the new location of your data file and select your new location then click on the “Open” button to begin the table relinking operation. Your TQS-9000 product is provided with a front end file and back end data file. The front end file connects to tables that are stored in your data file. All of your data is stored in the data file. Your data file is named “TQS\_be.mdb” by default.

**Note: You should not move your data file or try reconnecting your data file unless instructed to do so by your IT department or an ISP Software Solution Provider.**



Once you have reconnected your main program file to your data file if it has been moved you may check the table links by clicking on the "Check Table Links" button. You may also click on this button to check if your network connections are active if you are having difficulty accessing any portion of the program. When you click on the "Check Table Links" button you will see the progress meter shown below as your table links are verified.

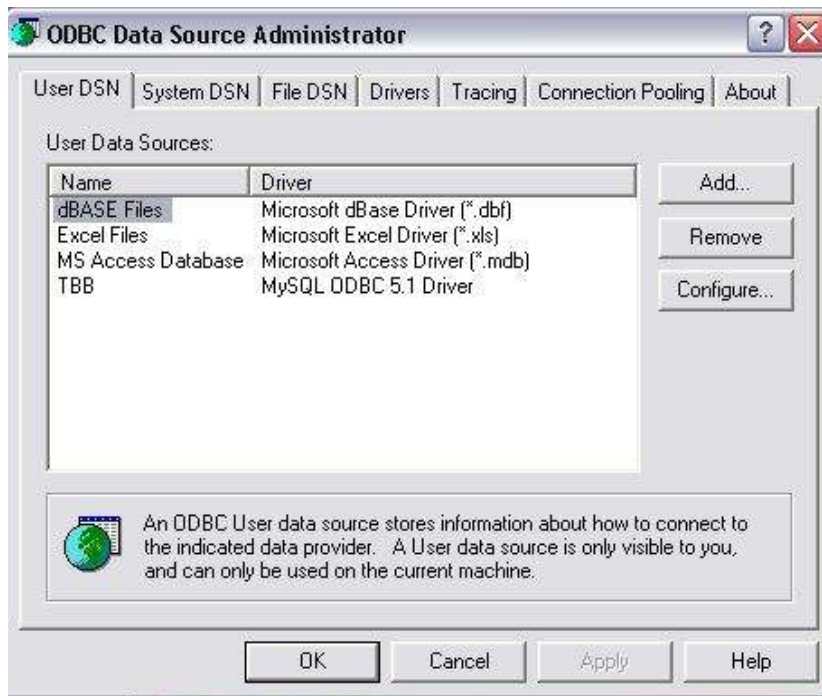


Once the verification process is completed you should see the message below indicating that all of your table links have been verified. If you receive a message indicating the table links could not be verified please make sure that your network connections are active and that you have security access to the directory where the data file is located. If your IT department has verified that all connections are good, please contact and ISP Software Solution Provider for assistance.



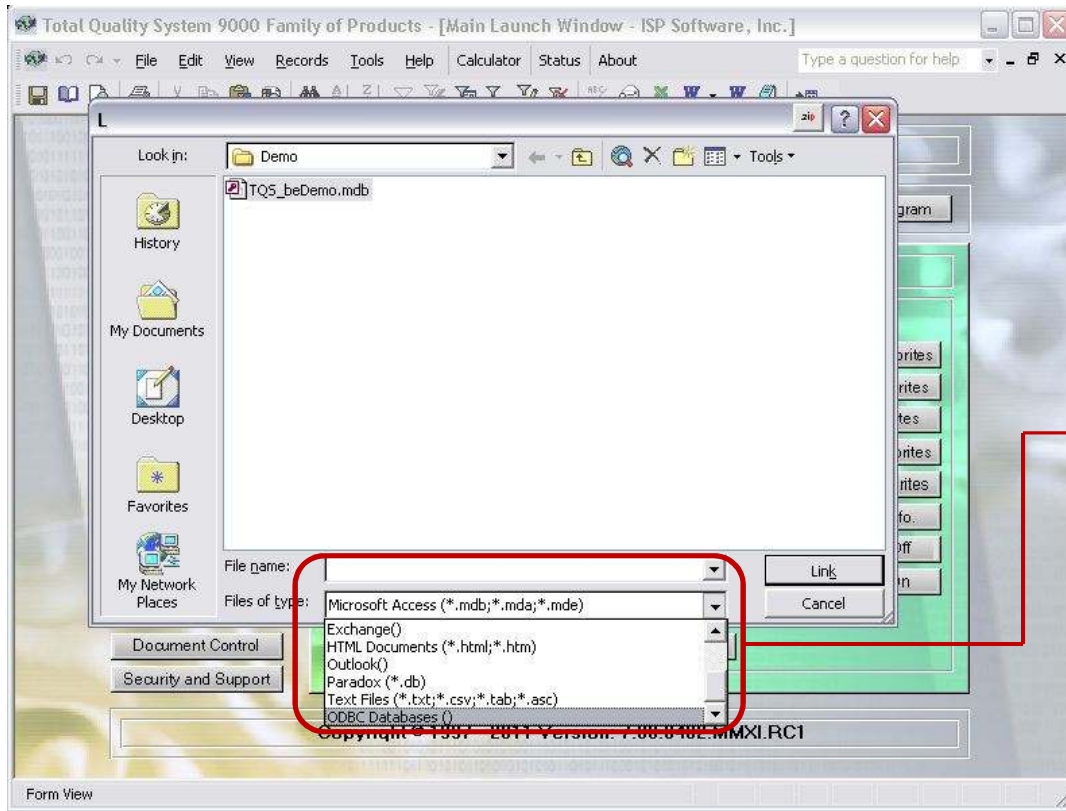
By selecting the “Configure ODBC” option from the “Settings” module, the “ODBC Data Source Administrator” will be activated. We have provided the MySQL Connector utility with your program that may be installed if you are going to upsize your data file to MySQL.

Please refer to the instructions provided with TQS-9000 Supplier Edition for more details related to configuring an ODBC connection.



The “ODBC Data Source Administrator” is a function of Windows and is normally installed or updated with your Microsoft Office Suite of products. The ODBC Administrator allows you to create new connections based upon your needs for accessing data that is not stored on the local machine.

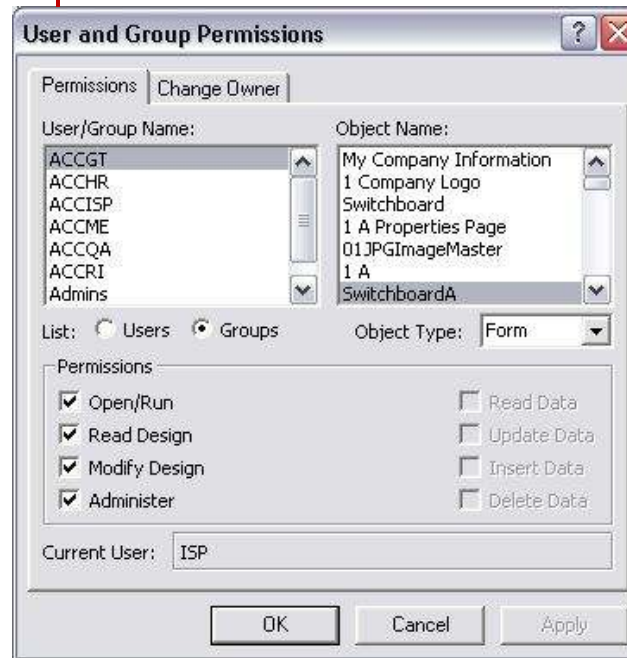
If you have purchased the TQS-9000 Supplier Edition or have a need to connect to a remote database you may select the “Link to Remote Db” feature. When you click on this option you will be presented with a popup window where you may select the type of file that you wish to connect with.



The types of files that you may connect to will be displayed in the drop down list at the bottom of the popup form. The choices that will be available will be determined on the software that is installed on the machine and the connections that have been made available to the user.



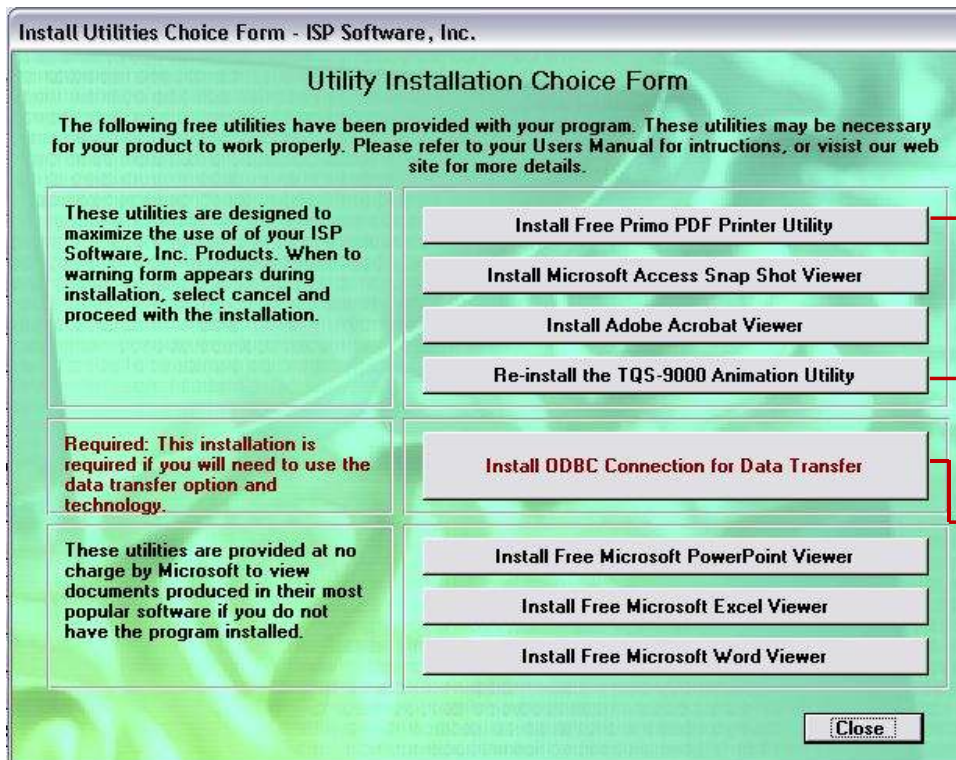
To view the current accounts setup in your software you may click on the “User Accounts” feature. Your TQS-9000 product has been shipped with several standard accounts and provides access to specific portions of the software based upon the user name and password provided when your product is opened. Details for each account are provided with your purchase. To modify a user account, create a new account, assign additional privileges, you will need to be signed in as the Administrator.



Every object in your TQS-9000 may have privileges assigned by the user account. This includes all tables, queries, forms, reports, macro's, and modules.

**We strongly not changing any privileges without a specific reason to do and with consulting and ISP Software Solution Provider before doing so, as you may not be able to operate your product as designed.**

Your TQS-9000 Product has been shipped with some additional utilities that may be installed if desired. These include a freeware .pdf virtual printer, Microsoft Access Snap Shot Viewer, Acrobat .pdf, viewer, an animation utility, ODBC clients, PowerPoint Viewer, Excel Viewer, and Word Viewer. If you already have a Microsoft Office suite of product installed you will not need to install most of these utilities. For more information regarding a specific utility or the need to install them, please contact an ISP Software Solution Provider for more details.



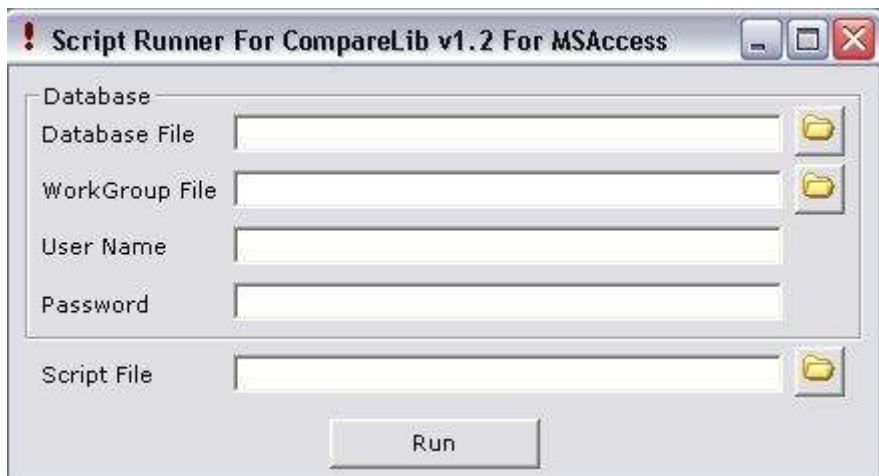
The freeware .pdf printer utility will install a feature to print any document in the .pdf format. This may be helpful in sending your reports via E-mail or storing them in the .pdf format on your server.

If you receive an error message after installing other software indicating that there is an "OLE" error, you may need to reinstall the animation utility that is provided during your initial setup of your TQS-9000 product.

If you have purchased the TQS-9000 Supplier Edition and need to install the MySQL utility, you may access the MySQL installation file from here.

If you are receiving an update from a previous version of your software, the "Update Data File" utility will assist in adding any new tables or fields that may be required for your update.

Complete instructions for updating your data file is provided with all product updates.



The information that you will need for updating your data file is as follow:

"Database File" is the current location of your existing data file.

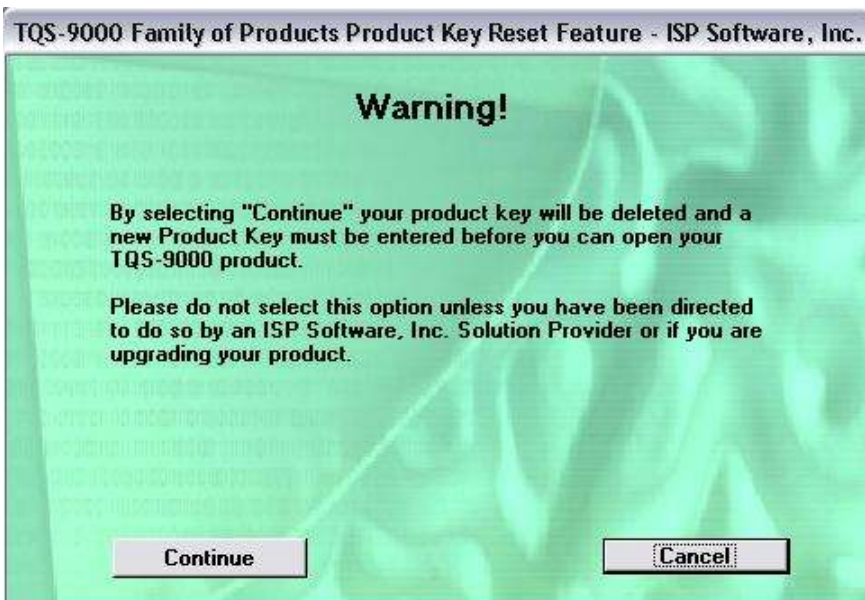
Workgroup File is the location of your existing security file. (Normally this is located in the "C:\Program Files\TQS\Security" directory and the name of the file is "TQS.mdw")

User Name is the Administrative User name used to sign into your program.

Password is the password associated to your Administrative User Name.

Script File is the script file provided with your update and may be downloaded from your company web page located on the ISP Software, Inc. web site.

The "Reset Product Key" feature should only be used if you have been provided a new Product Key by ISP Software, Inc. New product keys may be issued if you have updated your product to increase the number of users or if you are upgrading from either Total Advanced Quality 9000, Total Corrective Action 9000, or Total Gage Control 9000, to our Total Quality System 9000 product or if you are upgrading to the TQS-9000 Supplier Edition.



If your product key is deleted, you will not be able to open and run your product until a new key is entered or you re-enter your original key code that was provided with your product at the time of purchase.



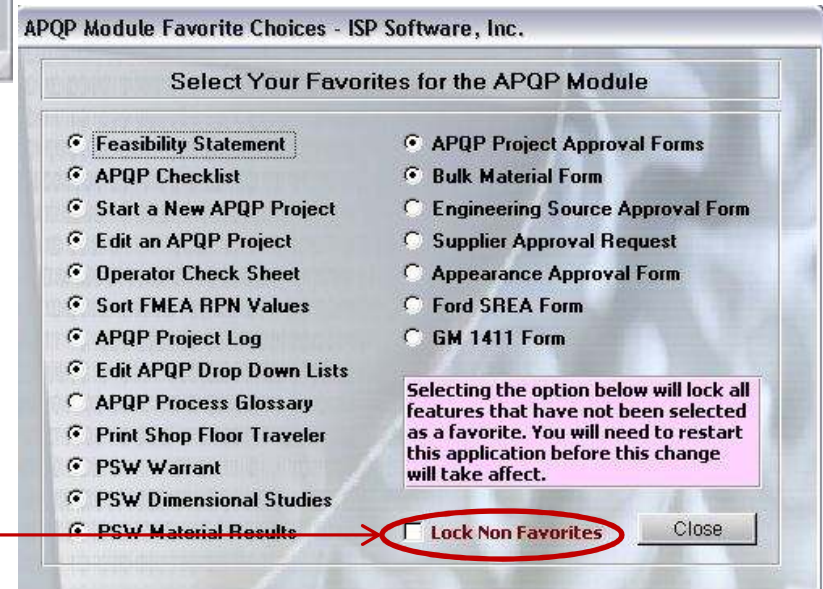
Each of the main modules in your TQS-9000 product comes with a “Favorites” form. On this form users may select which features they will be using and designate them as a favorite. If a feature is designated as a favorite a small dot will appear next to that feature in that module to aid in navigating your product.

In order to change these features the user must have access rights to that module. If the user does not have access to a specific module they will receive an error message when trying to open the favorites form.

You may open your company information form from the “Settings” module if you have hidden the form at startup and need to modify your information.

The mouse scroll feature may enabled or disabled from here. Your product is shipped with the feature automatically disabled as this helps reduce the chance of accidentally advancing records when working in a form. If you are working in a list and wish to be able to use the scroll feature you may enable it from here.

If the user elects to Lock Non Favorites those buttons in each module will be deactivated from use. This may aid the user in navigating their product and from using features that have not been approved to use internally.



# **Integrated Solution Providers Software, Inc.**



**Integrated Solution Providers Software, Inc.**

**P.O. Box 1281**

**Mount Pleasant, MI 48804**

**Toll Free: 877.865.7562**

**Fax: 989.317.0676**

Home Page: <http://www.ispsoftware-solutions.com>