

Total Quality System 9000 Family of Products

Optimum Program Settings



Copyright © 2011 Integrated Solution Providers Software, Inc.

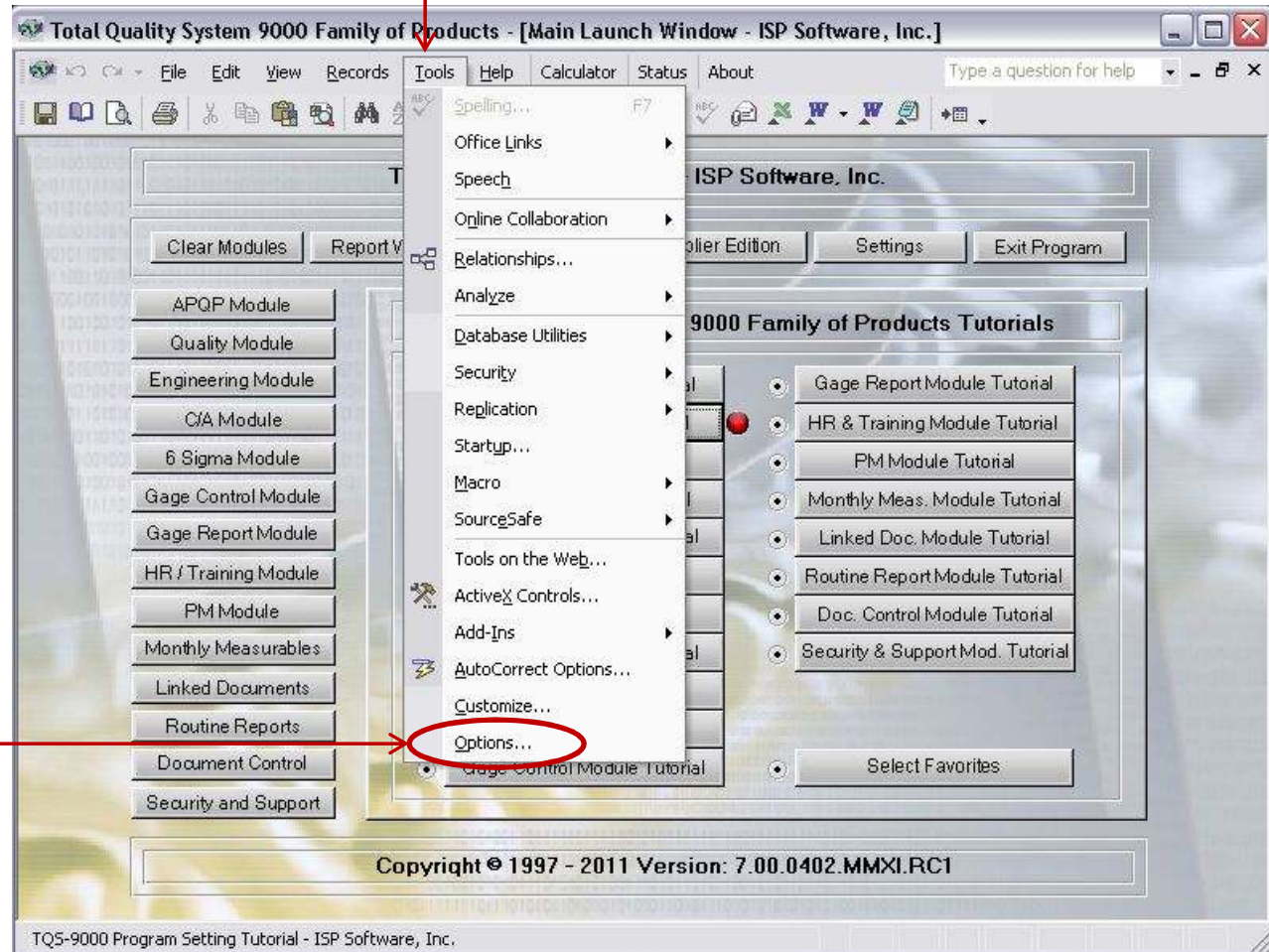
All rights reserved. No part of this publication may be reproduced, stored in a retrieval system, or transmitted in any form or by any means, electronic, mechanical, photocopying or otherwise, without the prior written consent from ISP Software, Inc.

Toll Free: 877.865.7562 Fax: 989.317.0646

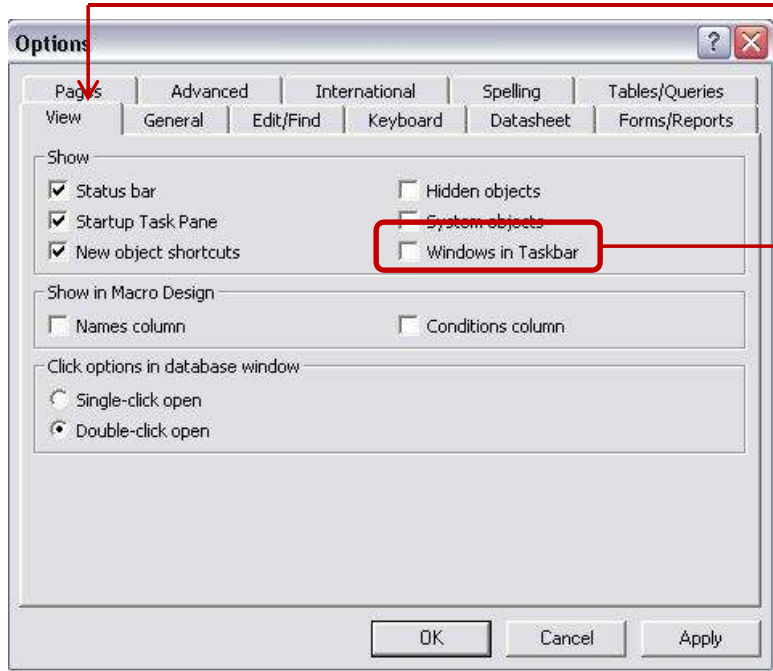
E-mail: Sales@ispsoftware-solutions.com Web Site: <http://www.ispsoftware-solutions.com>

On the following pages of this tutorial, ISP Software, Inc. suggests that all settings be set to match the screen shots. Some of the more important settings will be noted as they directly affect how the program may operate.

To access your TQS-9000 program settings, click on the "Tools" button located on the menu bar. A drop list will then be presented.



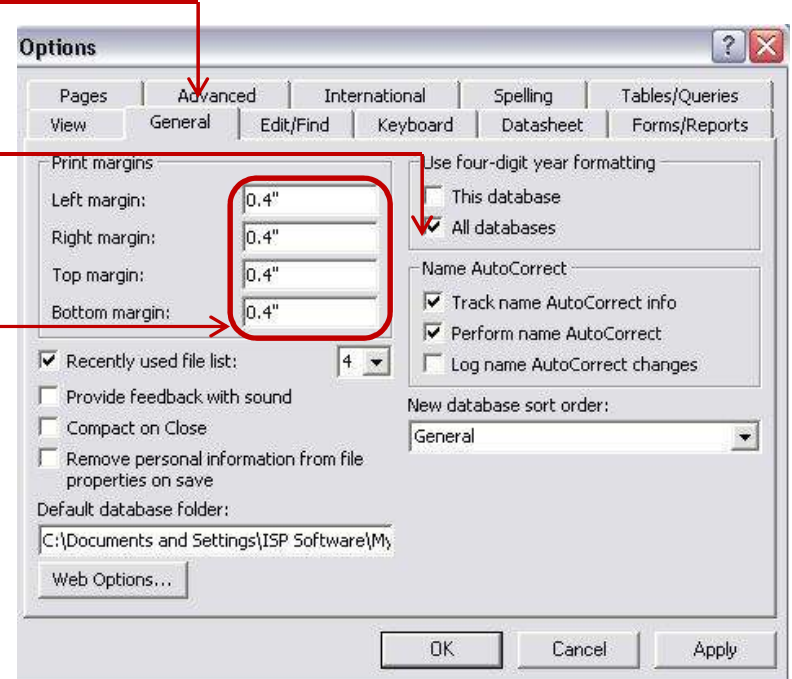
From the drop down list, select the "Option" option to view the options that can be customized for your installation.

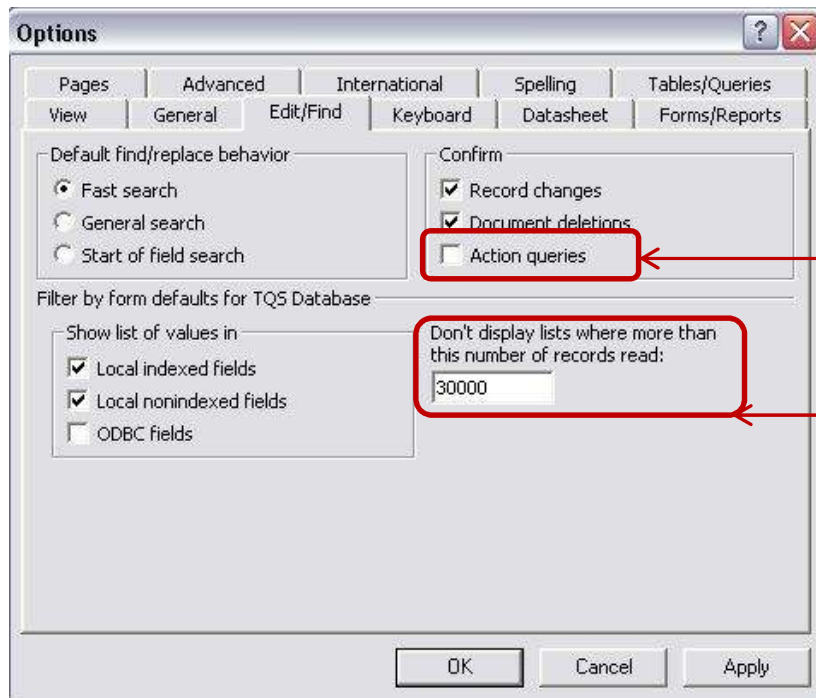


View Tab:
 If this check box is checked, every form that is minimized will show in your Windows system tray. This can clutter your system tray and make navigating your open programs more difficult. We suggest that unless there is a specific reason to do so that this feature not be enabled.

General Tab:
 ISP Software, Inc. recommends that the four digit year format be set for all databases as many of our users have used our products for over 10 years.

Setting the print margins to .4" for all may assist with printing margins on some printers.





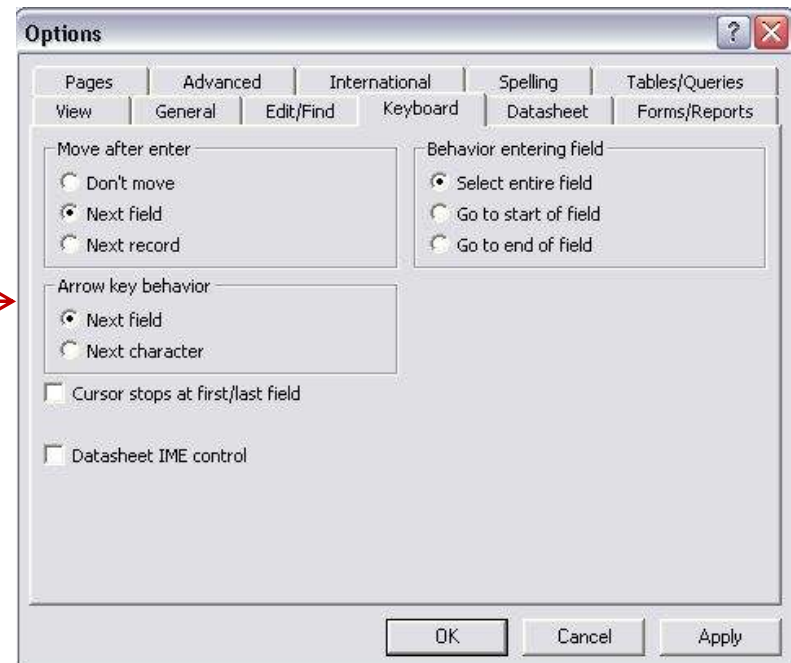
Edit/Find Tab:

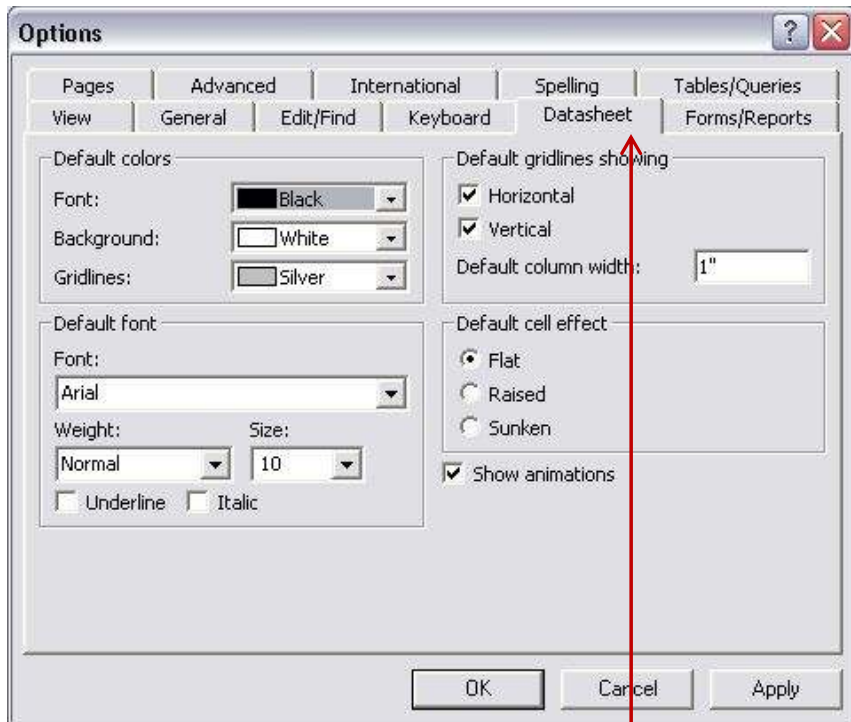
Unselecting the “Action Queries” option is very important. If this option is selected each time an action query is ran the program will respond with A dialogue box asking if you want to continue. Several action queries are included in your TQS-9000 product and should run invisibly to the user. Action queries are those queries that are manipulating your data. This can be a copy, delete, or append operation.

Setting this option to 30,000 will allow you to view the maximum amount of records if necessary.

Keyboard Tab:

The options on this tab may be set to meet the users preferences. The options shown in this screen shot match the most common preferences used by our customers.



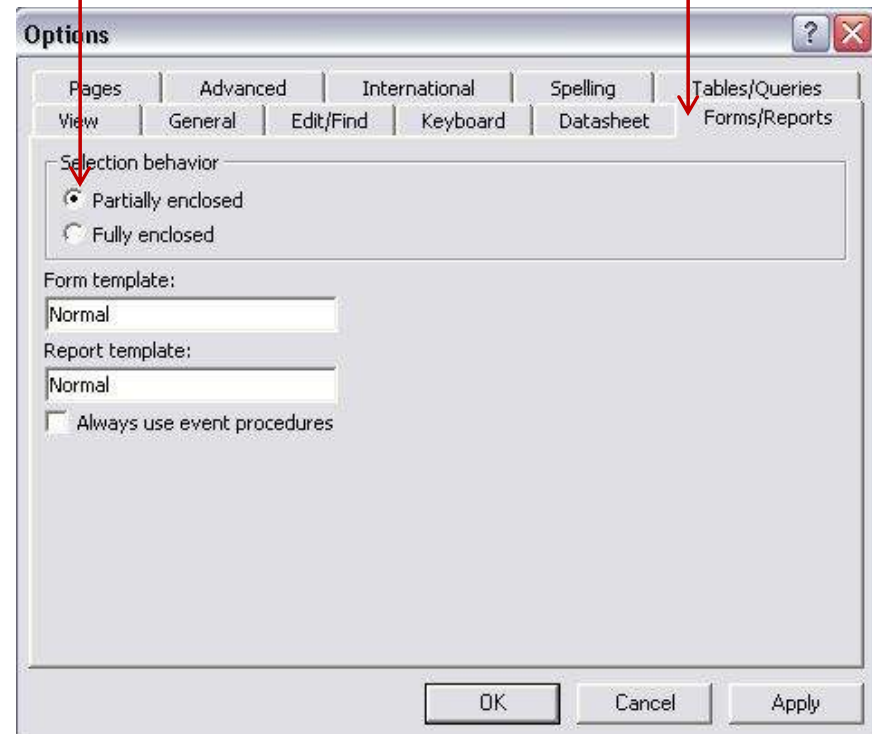


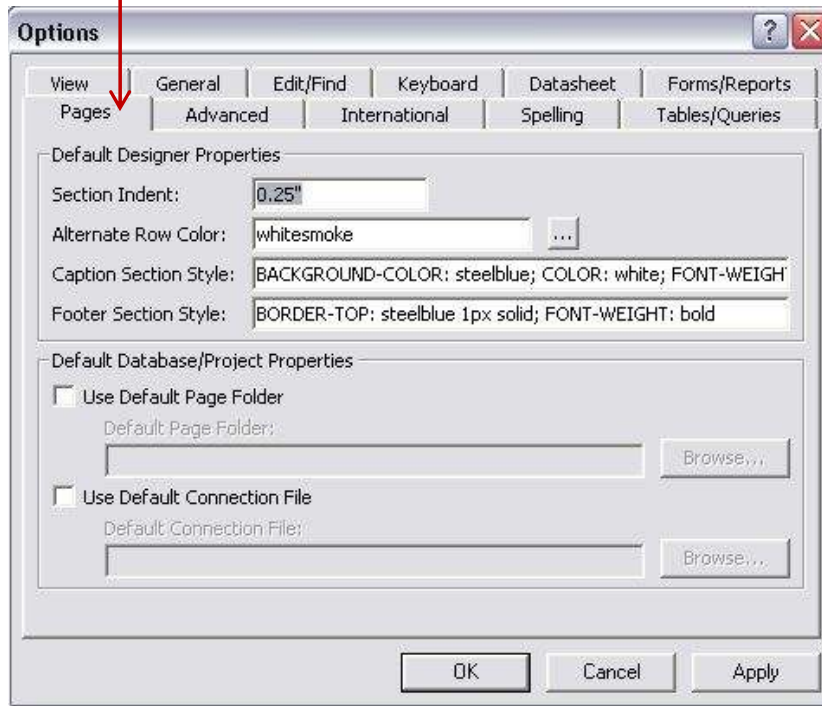
Datasheet Tab:

The options on this tab may be set to meet the users preferences. The options shown in this screen shot match the most common preferences used by our customers.

Forms/Reports:

The "Partially enclosed" feature should be selected on this tab.





Pages Tab:

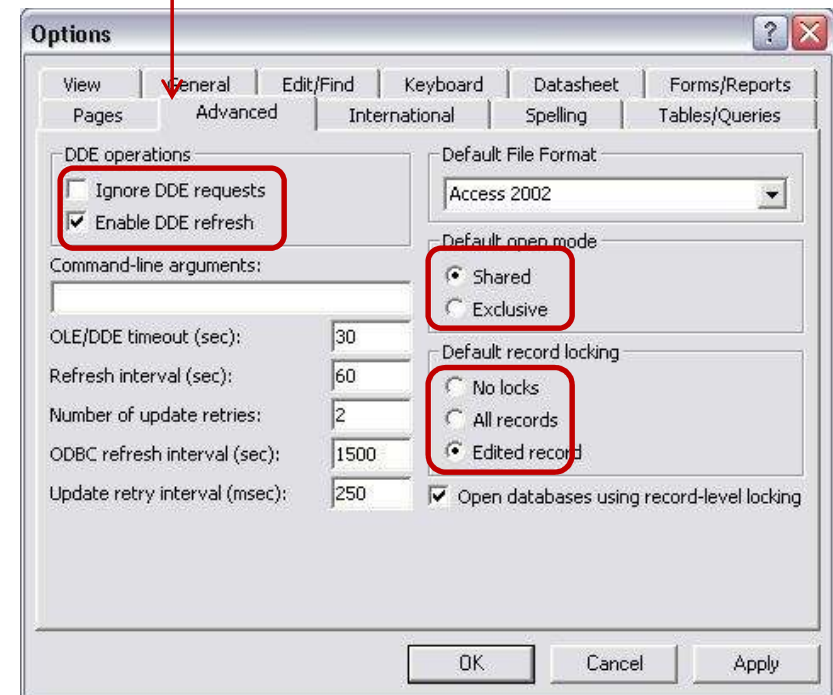
The options on this tab should match what is shown or match your users preference. There are no changes required on this tab.

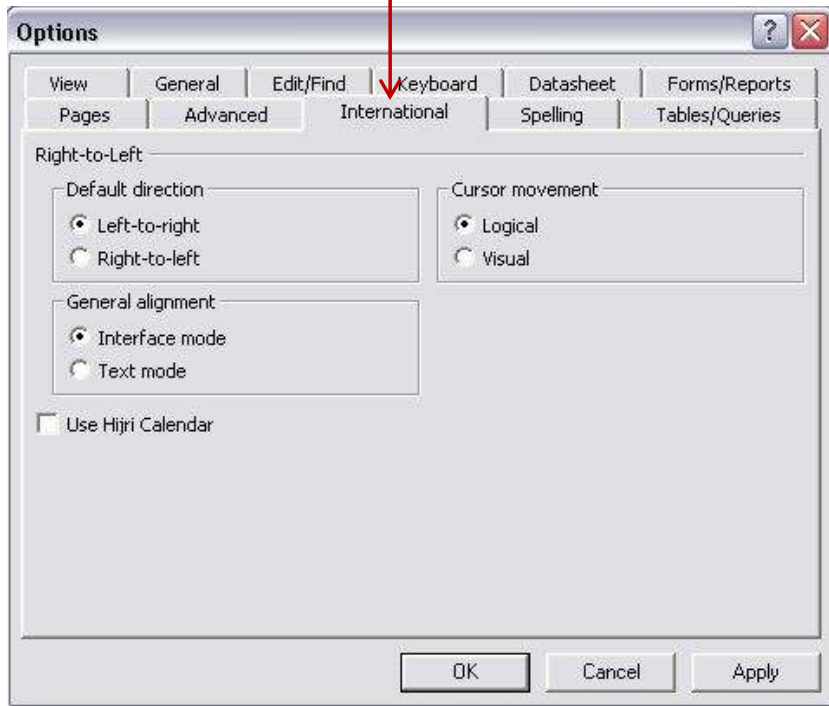
Advanced Tab:

DDE operations should have the “Enable DDE refresh option selected.

It is important that the “Default open mode” to be set to “Shared” as if it is not other users may be locked out of the program when opened.

For security reasons and to assure data integrity it is important that under “Default record locking” that the “Edited record” option be selected.



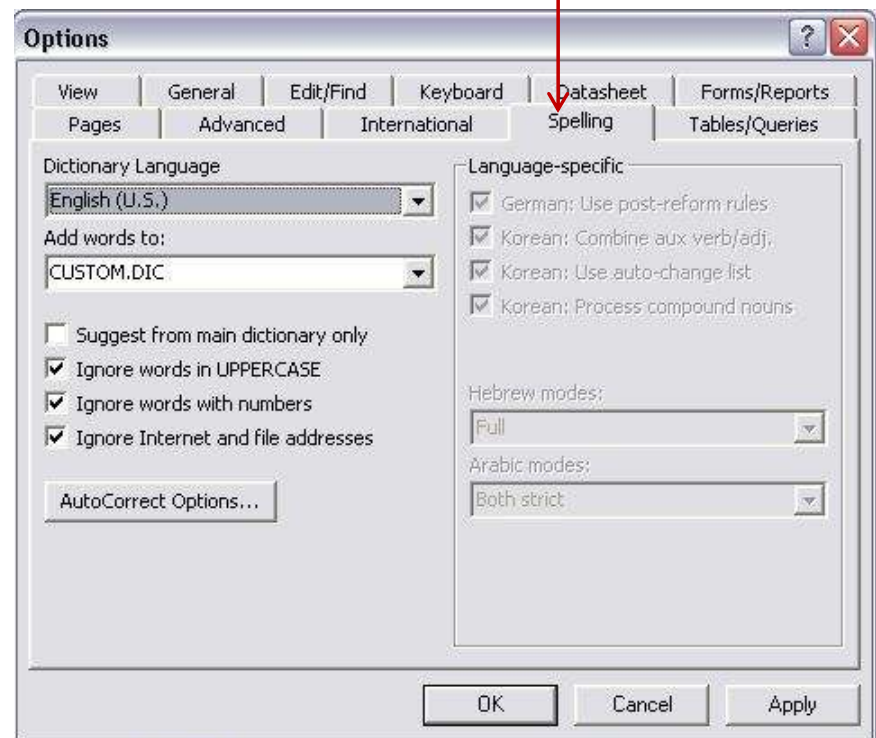


Spelling Tab:

This tab may be set to the user preferences.

International Tab:

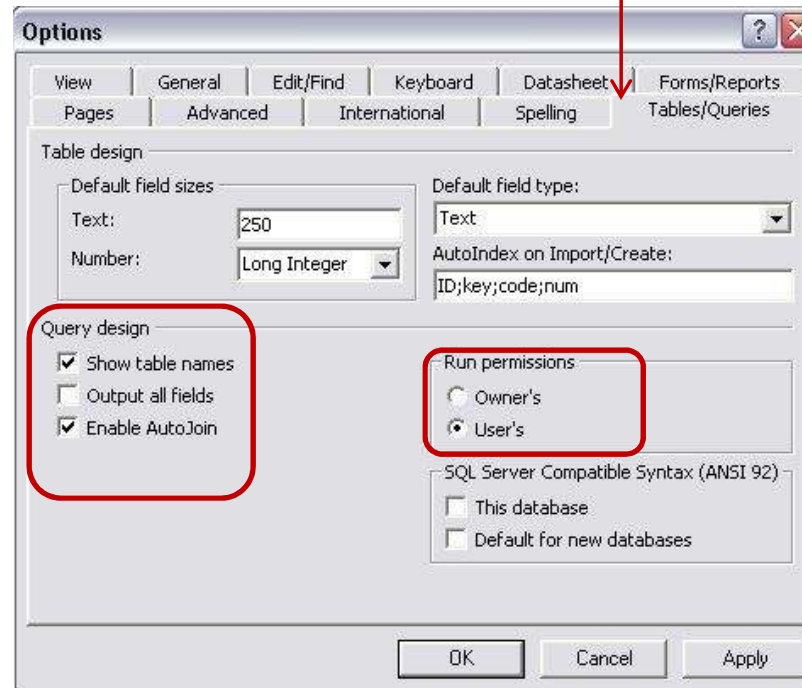
This tab may be set to the user preferences.



Tables/Queries Tab:

The “Query design” should have the “Show table names” and “Enable Auto Join” features enabled on this tab.

The “Run permissions” should be set to “User’s” on this tab to assure your security settings function properly.



Integrated Solution Providers Software, Inc.



Integrated Solution Providers Software, Inc.

P.O. Box 1281

Mount Pleasant, MI 48804

Toll Free: 877.865.7562

Fax: 989.317.0676

Home Page: <http://www.ispsoftware-solutions.com>