

Total Quality System 9000 Family of Products

Using MS Access with Your TQS-9000 Application

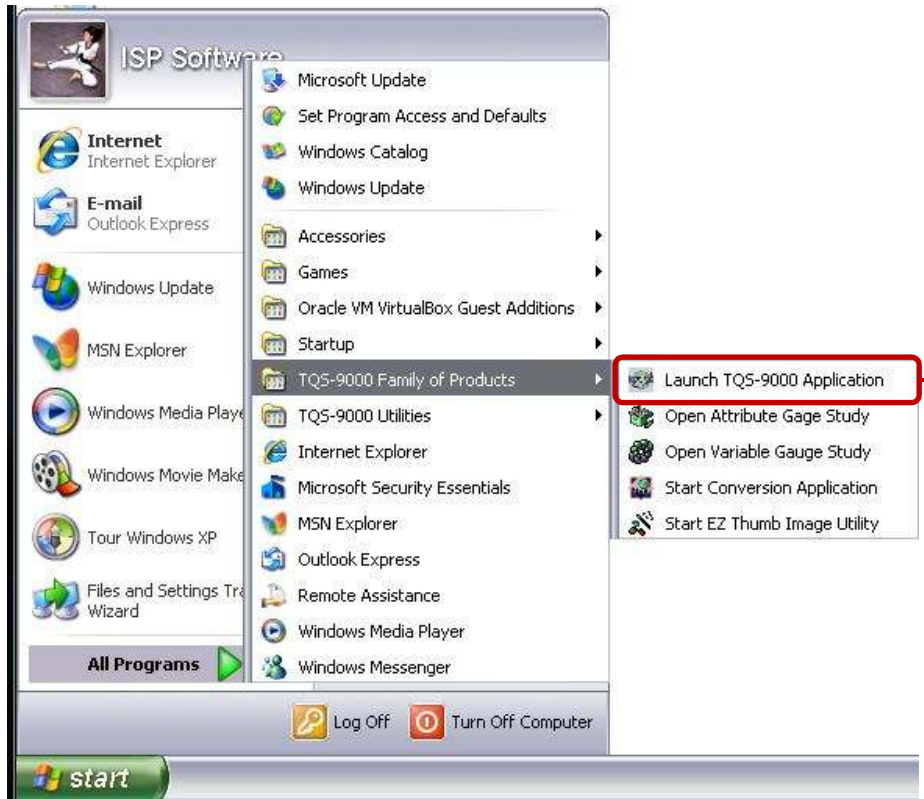


Copyright © 2011 Integrated Solution Providers Software, Inc.

All rights reserved. No part of this publication may be reproduced, stored in a retrieval system, or transmitted in any form or by any means, electronic, mechanical, photocopying or otherwise, without the prior written consent from ISP Software, Inc.

Toll Free: 877.865.7562 Fax: 989.317.0646

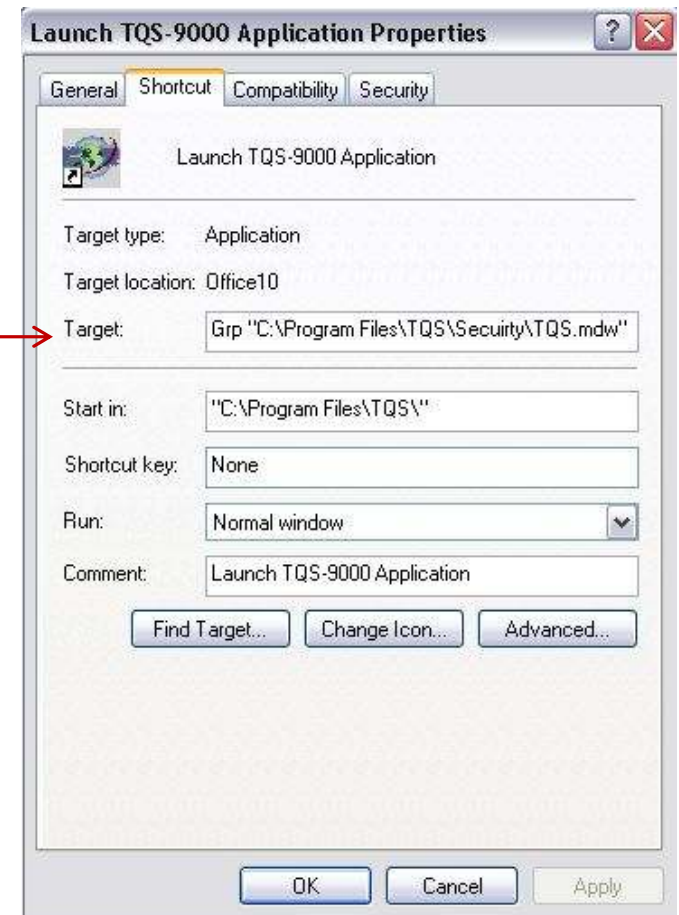
E-mail: Sales@ispsoftware-solutions.com Web Site: <http://www.ispsoftware-solutions.com>



When your TQS-9000 application is installed it will include the Microsoft runtime files if a compatible version of MS Access is not already installed.

The runtime files allows you to run a Microsoft Access application without having to have a license for Microsoft Access. No additional licenses are required to run a Microsoft Access application although not all features of Microsoft Access will be available. You may not create a new Microsoft Access file or edit an application with the runtime files.

If the setup program recognizes a compatible version of MS Access on your computer, the TQS-9000 application may use the existing installation to run the program.



Your TQS-9000 application has been developed in Microsoft Access 2002. Newer versions of MS Access may be used to open and run your application. If you wish to use your existing MS Access program to open and run your TQS-9000 application you may do so. By using a current installation of MS Access to open and run your application you may have some additional features available in your program that are provided in the full version MS Access.

To change your existing application to use the MS Access application on your machine you need to change how the program is called up.

To do this you must right click on the icon that starts your program to see how it has been configured. Locate your launch icon and right click on it, then select properties to view the current configuration.

"C:\Program Files\Common Files\Microsoft Shared\Access Runtime\Office10\MSACCESS.EXE" /Runtime "C:\Program Files\TQS\TQS.mdb" /WrkGrp "C:\Program Files\TQS\Security\TQS.mdw"

When you right click on icon that start your program you may look at the string that is contained in the "Target" field to understand how the program is being called up. Above is the standard string that will appear if the program has installed the runtime files.

Below is an explanation of the string:

- 1) The first part of the string indicates where the MS Access program is located that is being used to open your application. "C:\Program Files\Common Files\Microsoft Shared\Access Runtime\Office10\MSACCESS.EXE"
- 2) The second part of the string is indicating the program should be opened in runtime or limited mode: /Runtime
- 3) The third part of the string lets the program know where the main program file for your application is: "C:\Program Files\TQS\TQS.mdb"
- 4) The fourth part of the string indicates that your program should use a specific security file when it is opened: /WrkGrp
- 5) And the last part of the string indicates where your security file is located: "C:\Program Files\TQS\Security\TQS.mdw"

To change your application to start with your current version of MS Access you will need MS Access 2002, 2003, 2007, or 2010 installed. You may change the string as follows to start your application with an existing version of MS Access:

Change the first part of the sting to reflect the current location of your MS Access location. Below is an example of an MS Access 2003 installation.

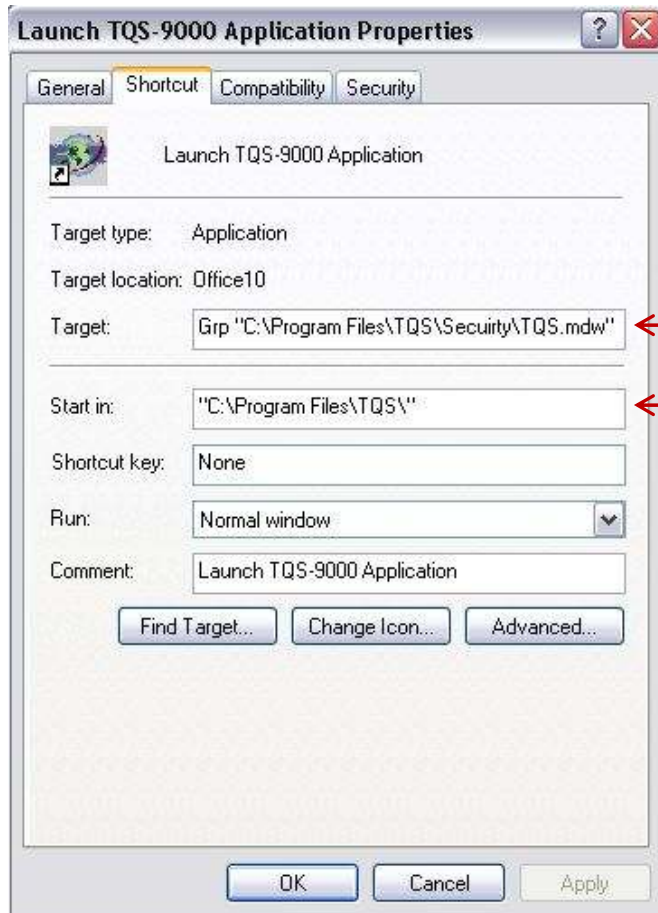
"C:\Program Files\Microsoft Office\OFFICE11\MSACCESS.EXE"

You may delete the /runtime command

"C:\Program Files\Microsoft Office\OFFICE11\MSACCESS.EXE" "C:\Program Files\TQS\TQS.mdb" /WrkGrp "C:\Program Files\TQS\Security\TQS.mdw"

If you wish to use a shared security file to simply administering security, you may place the "TQS.mdw" file on your network drive and change the string to point to the new location of the file.

For more help on setting up application to use your current installation of MS Access, please contact an ISP Software, Inc. Solution Provider.



The "Start in": field indicates where your main program file is located.

Integrated Solution Providers Software, Inc.



Integrated Solution Providers Software, Inc.

P.O. Box 1281

Mount Pleasant, MI 48804

Toll Free: 877.865.7562

Fax: 989.317.0676

Home Page: <http://www.ispsoftware-solutions.com>